



UNIDADE DE GESTÃO DE PROJECTOS ESPECIAIS

CABO VERDE RENEWABLE ENERGY AND IMPROVED UTILITY PERFORMANCE PROJECT

Av. Amílcar Cabral, Ex Edifício do BCV, 4º andar
PO Box 145, Plateau, Cidade da Praia, Cabo Verde
Telefones: (+238) 261 75 84 / 261 59 39
Fax: (+238) 261 59 39

www.governo.cv

CLARIFICATION # 12

Country: Cabo Verde

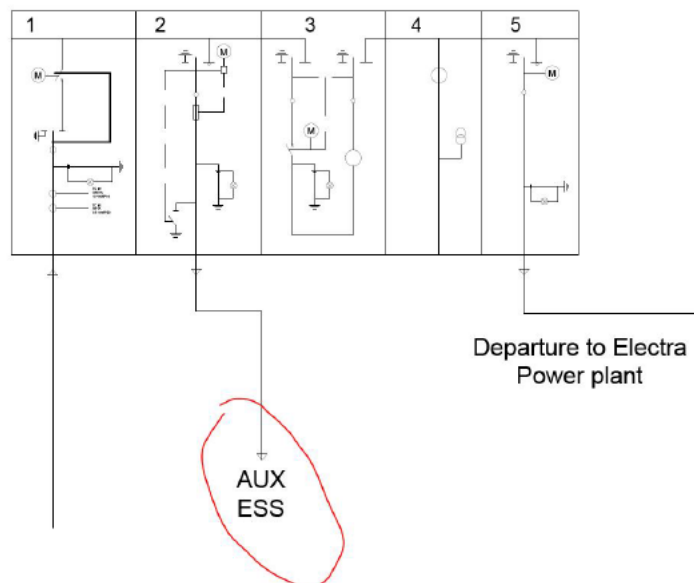
Name of Project: Renewable Energy and Improved Utility Performance Project

Contract Title: Request for Bidding - Procurement of Plant, Design, Supply, and Installation for Five (5) Energy Storage Systems in FOGO Island, SANTO ANTÃO Island, SÃO NICOLAU Island, MAIO Island and BRAVA Island Cabo Verde

Loan No IBRD-92980

RFB Reference No.: 016/REIUP/UGPE_2

QUESTION 61: *According to the requirements of the bidding documents, the contractor needs to provide 2 auxiliary transformers as backups for each other. According to the single-line diagram, a 20kV medium-voltage switchgear needs to provide a circuit to the ESS auxiliary power supply. According to this single-line diagram, the contractor needs to configure a 20/0.4kV auxiliary transformer. As an exception, can we set up an auxiliary transformer on the low-voltage side of the PCS? For example, if the low-voltage side of the PCS is 0.69kV, can we set up a 0.69/0.4kV transformer and integrate it into a box with the PCS to reduce the overall footprint?*



ANSWER N° 61: The Single Line Diagrams are only provided for information. Please refer



UNIDADE DE GESTÃO DE PROJECTOS ESPECIAIS

CABO VERDE RENEWABLE ENERGY AND IMPROVED UTILITY PERFORMANCE PROJECT

Av. Amílcar Cabral, Ex Edifício do BCV, 4º andar
PO Box 145, Plateau, Cidade da Praia, Cabo Verde
Telefones: (+238) 261 75 84 / 261 59 39
Fax: (+238) 261 59 39

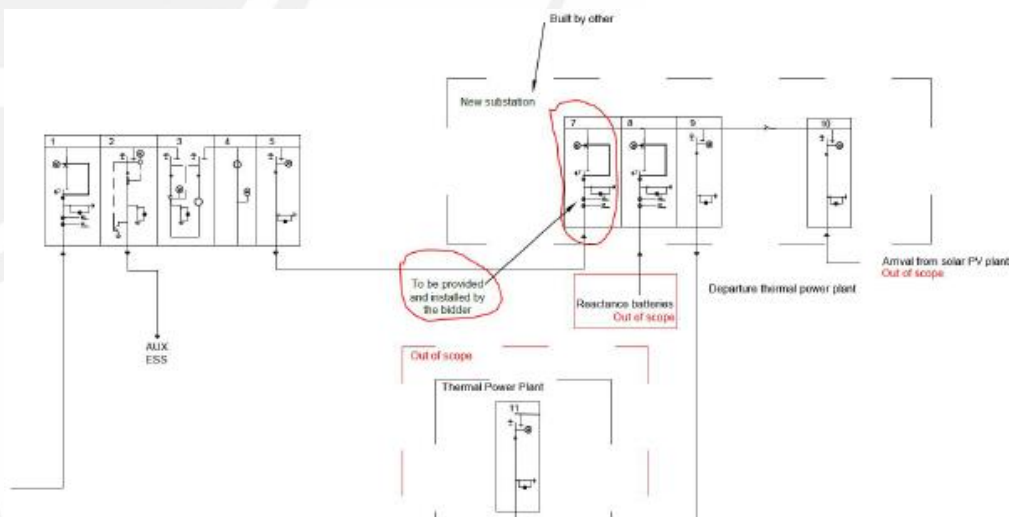
www.governo.cv

to the Employer's Requirements - Scope of work #7.4.3. Please refer to the ITB 14.3 : Alternative technical solutions shall not be permitted.

QUESTION 62: *Does the contractor need to configure an AC/DC auxiliary power supply for the new 20kV medium-voltage switchgear? Can Electra Power Plant provide this power supply?*

ANSWER N° 62: Please refer to the Employer's Requirements - Scope of work #7.4.2 . The Bidder shall supply, install, and commission the AC/DC conversion system for the 20 kV switchgear (located in the Electra Power Plants). The AC Power will be provided by the Employer.

QUESTION 63: *The single-line diagram of the Santo Antao Island project clearly shows that the bidder needs to provide a switchgear to connect to the 20kV busbar of the thermal power plant. However, the single-line diagrams of the other four projects do not specify whether this is needed. Please confirm whether it is required?*



ANSWER N° 63: The Single Line Diagrams are only provided for information. Please refer to the Employer's Requirements - Scope of work #7.4.2. The Bidder shall provide the switchgear to connect the BESS to the Grid at the connection point (new substations in Santo Antao and Brava, Electra power plant in Sao Nicolau and Fogo, Solar PV plant in Maio. Note that the Bidder shall also supply and install a MV 20 kV-cable and terminations between the BESS and the Electra Power Plant in Maio. This cable will be the permanent



UNIDADE DE GESTÃO DE PROJECTOS ESPECIAIS

CABO VERDE RENEWABLE ENERGY AND IMPROVED UTILITY PERFORMANCE PROJECT

Av. Amílcar Cabral, Ex Edifício do BCV, 4º andar
PO Box 145, Plateau, Cidade da Praia, Cabo Verde
Telefones: (+238) 261 75 84 / 261 59 39
Fax: (+238) 261 59 39

www.governo.cv

connection of the BESS to the grid once the rehabilitation works will be finished in the Electra Power Plant.

QUESTION 64: *During the project execution, does the implementing entity need to pay taxes? If so, what taxes are applicable, and what are the respective tax rates?*

ANSWER N° 64: For both foreign and local purchases, the Project itself is exempt of VAT. Under the Contract, Supplier's invoices are paid in full by the Project, free of any tax deduction or retention. The Project is also exempt from custom duties. However, bidders are responsible for custom clearance and port fees.

QUESTION 65: *In Section III – Evaluation and Qualification Criteria of the RfB, it is stated in the Qualification criteria the following requirement regarding experience in BESS projects: “Experience in Battery Energy Storage, System, and Medium Voltage (MV) substations, under contracts in the role of a main contractor, subcontractor, or management contractor for at least the last eight (8) years starting 1st January 2016.”*

Does it mean that the single bidder (or all members of a JV) shall present evidence of experience in EPC / BoS of BESS projects from at least Jan/2016 to the present date? Objectively, a bidder will be excluded if presents evidence of experience only during the last 2 – 3 years?

ANSWER N° 65: Please refer to the Clarification 8 - Answers 54 & 55

QUESTION 66: *We noticed that in Clarification #1 you addressed this topic by stating that topographic and soil surveys must be submitted with the Technical Offer to assess the quantity of civil works and the solution presented for the foundations design applied to containerized buildings. Aren't these on-site surveys something you could re-consider to be carried out after award? Our suggestion for the design carried out for the proposal package would be to obtain the topographic contours using reliable software to render 3D representation of earth based on satellite imagery. Regarding the BESS foundations / platforms, we intend to adopt a conservative design that will follow manufacturer's suggestions and certainly meet the soil characteristics of each project, being something to justify and optimize once geotechnical surveys are carried out by us to prepare IFC documentation. Are you willing to accept this approach?*



UNIDADE DE GESTÃO DE PROJECTOS ESPECIAIS

CABO VERDE RENEWABLE ENERGY AND IMPROVED UTILITY PERFORMANCE PROJECT

Av. Amílcar Cabral, Ex Edifício do BCV, 4º andar
PO Box 145, Plateau, Cidade da Praia, Cabo Verde
Telefones: (+238) 261 75 84 / 261 59 39
Fax: (+238) 261 59 39

www.governo.cv

8.1 STUDIES AND SURVEY

The Contractor shall supply as a minimum the following documents, as shown in Table 20:

Table 20 - Documents and Drawings Required based on Design Package

Deliverable	Proposal package	30 %	60 %	90 %	IFC	As Built
Survey						
Topographical Site Survey	X	X	X	X	X	X
Soil Survey	X	X	X	X	X	X

ANSWER N° 66: Please refer to the Clarification 9 - Answers 57 & 58

May 23, 2024